

TIMELESS
ELEGANCE WITH
SUSTAINABLE
SURFACE FINISHES

I CONTENTS I

Company Introduction	04
Product Portfolio	06
• Our Decorative Sheet	
• Our Brand Story	
• BELITAPET	
• BELITASA	
Trend Suggestions with our products	12
• Colorful Surfaces	
• Slab Splashbacks – Marble, Pearl	
• Broken Beauty	
• Color Toned Timber and Fine Texture	
• Metal	
• Looks Like Stone	
• Pink Kitchen	
Sustainability	22
• Recycle PET (GRS)	
• BioMass PET	
Quality Control	26
Certifications	27
Light Fastness	28

We make difference with the spirit of innovation.

Born in 1981, KP-tech is a company with a long history of about 40 years. We are the market leader with the core competencies of PVC pharmaceutical films, APET based sustainable packaging films and decorative sheeting.

Our product range includes GAG, ASA, rPET and BIOMASS PET.

Decorative sheet evolved out of our APET production capabilities that went from 40 years of know-how. We will continue to lead in innovations in our market sectors and will continue to make major contributions to recyclable and reusable products.

40 Years of Know-how
Technological Innovation
Customer Orientation
Quality Control
Recyclable & Reusable

1980
Humble beginning

1998
First manufacturing of PVC

2002
First APET manufacturing

2013
Decorative APET sheet production begins

2017
Decorative ASA sheet product initiated

2019
State of the art UV coating facility commissioned

Product Portfolio

Our decorative sheet

- Our in-house coating capabilities ensure that our clients are able to select their choice of finished decorative surfaces.
- Our high-end decorative sheet is vertically integrated with latest technology UV coating equipment to ensure we deliver.
- These include high-gloss and super-matt finished that can offer scratch resistance, high weather resistance and an infinite variety of color-matching options.



Common Benefit



On Request



Our Brand story

KP-tech has developed high-quality decorative sheet products. These products are based on eco-friendly manufacturing processes and fall under the brand names "BELITASA", and "BELITAPET".

Highly - weatherable, UV resistant BELITASA and brilliantly - colored BELITAPET.

Our decorative films, are produced based on the corporate sustainability philosophy and will transform your kitchen and living areas into uniquely beautiful and eco-friendly spaces.

Certifications ISO. DIN, SCSglobal, Korea Eco-Label, BRC. FDA. HB and Global Recycle Standard(GRS).



Product Portfolio



BELITAPET is a brand that covers the wide color spectrum with our rich and vibrant color sheets.

In addition to being environmentally friendly, their excellent quality makes them suitable for laminates for kitchens and other furniture.

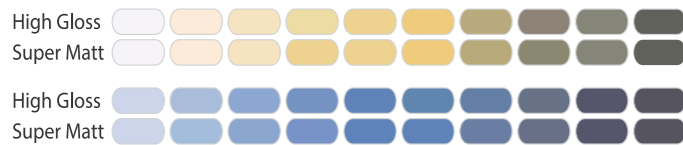
The specifications of decor sheet that can be produced by KP-tech are 0.2 ~ 0.8mm in thickness and 1200 ~ 1500mm in width.

And by building our own coating line, the coating adds features such as scratch resistance, high gloss, ultra matt, and anti-fingerprint, and ensures a hardness of at least H hardness.

1 GAG(3 Layer)

Excellent weather resistance and vivid colors with the balance technology of Main (A Layer) and Sub (G Layer) facilities

2 Clear Color / Wide Color Spectrum

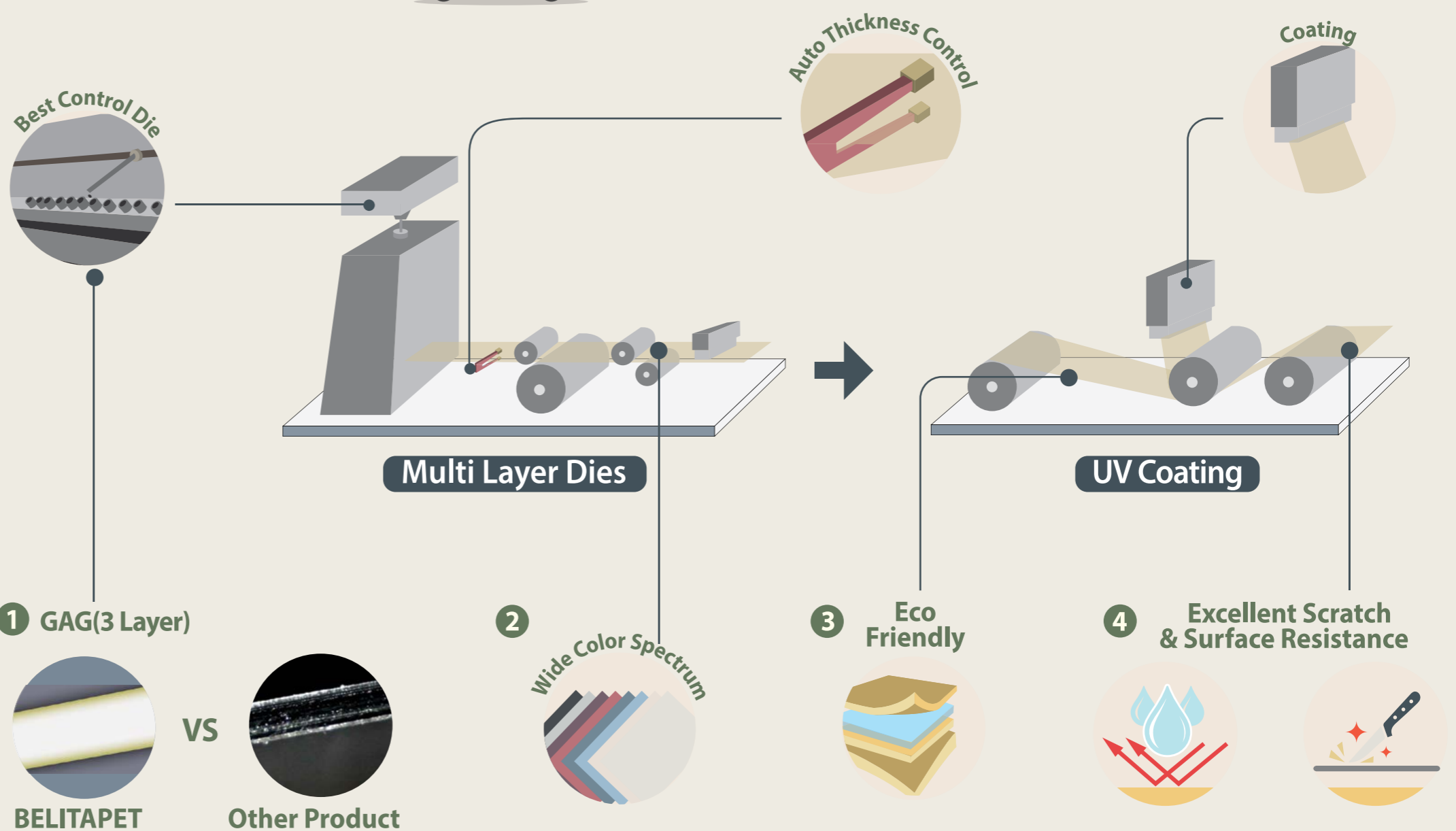
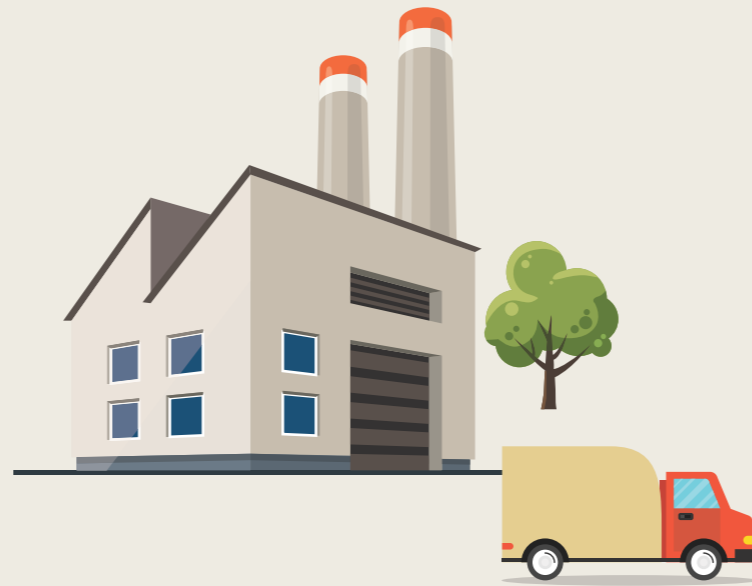


3 Eco Friendly

Environmental benefits include no formaldehyde (HCHO), plasticizers, heavy metals or volatile organic compounds TVOC (Total Volatile Organic Compounds).

4 Excellent Scratch and Surface Resistance

Covers both UV-A and UV-B wavelengths and cures to resist scratches





BELITASA is a decorative sheet that retains the advantages of ASA and its unique UV-resistant, non-yellowing performance excellent processability and 3D forming make it suitable for high-end kitchen and other furniture applications.

ASA **What is ASA? (Acrylate Styrene Acrylonitrile)**

ASA, a new material, is a copolymer of SAN & acrylic rubber. It is a highly functional plastic that has most of the advantages of ABS and has excellent weather resistance. Even when used outdoors for a long time, it has little change in physical properties and appearance, so it is used for automobile exterior materials, building materials, and furniture seats.

ASA is generally more weather resistant than PVC or GAG and can exhibit a high gloss and smooth appearance.

In addition, the heat resistance test was recognized for its excellent thermal stability and appearance quality.

Benefit **1 Weather Resistance**

BELITASA is non-yellowing as a result of UV exposure and is highly UV resistant under both fluorescent lighting and natural sunlight.

2 Heat Shock

BELITASA provides and maintains its appearance quality even after long exposure to heat and UV.

3 3D Forming

BELITASA can be done 3D forming that make it suitable forming high-end kitchen and other furniture applications.

TREND SUGGESTION BELITASA PRODUCTS

- 13 Colorful Surfaces
- 14 Slab Splashbacks
- 15 Broken Beauty
- 16 Color Toned Timber and Fine Texture
- 18 Metal
- 19 Looks Like Stone
- 20 Pink Kitchen

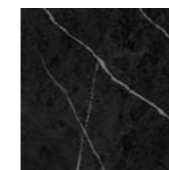
TREND SUGGESTIONS WITH OUR PRODUCTS

Colorful Surfaces

Cosy

Cottage

Modern

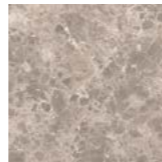


Sera

Slab Splashbacks

Marble

Pearl



Grigio

Broken Beauty

Marble

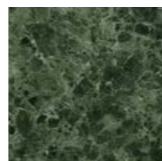
Pearl



Powder



Tundra

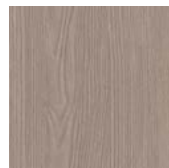


Jade

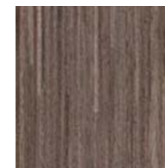


Onyx

Color Toned Timber And Fine Texture

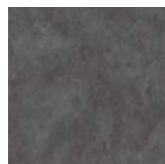


Pine Silver



Assam

Metal



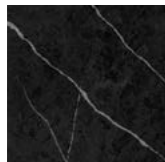
Misty

Looks Like Stone



Saturn

Pink Kitchen



Sera

Pink Kitchen



OUR SUSTAINABLE STORY

Beyond the Surface

**We are conscious of
our consumption and choosing
longevity over novelty and wasting less.**

We are committed to drive a mission that is designed to protect the natural environment and sustain a healthy human life.

KP-tech's food packaging business is committed to the market leader in the use of recycled post-consumer bottle flake to be repurposed into thermoformable food packaging. Furthermore, it reflects long-term know-how in the Decorative sheet and produces the Recycled PET for Decorative sheet in high quality.

One interesting statistic is that we use in manufacturing operations the approximate equivalent of over 800 million post-consumer drink bottles and are responsible for environmental protection by safety repurposing discarded APET bottles.

KP-tech is committed to the manufacture of sustainable products as a permanent core corporate commitment.

OUR RESPONSIBLE AND SUSTAINABLE PRODUCTS

01

-800 million

Approximately over 800 million of post-consumer bottles are converted into the flake for extrusion.

02

-CO₂

Global warming caused by CO₂ emissions, and environmental pollution caused by waste polyethylene terephthalate (PET) disposal, are commonly considered as two stand-alone urgent environmental issues. However, using BIOMASS PET could provide a promising approach to solve the two environmental issues, simultaneously.

03

-Waste

Recycling can prevent the waste of potentially useful materials and reduce the consumption of fresh raw materials. It is an alternative to "conventional" waste disposal that can save material and help lower greenhouse gas emissions.



Recycled



Recycling processes are being carried out in many areas to efficiently use limited resources, prevent global warming, and preserve the environment.

KP-tech can produce the decorative finishes using discarded PET bottles (Post-consumer bottle).

- More than 40 years of r-pet manufacturing know-how
- 70% post-consumer
- GRS Certification

Biomass



We applied to interior components for the first time in the industry in 2021. Biomass PET utilize the biomass resources of regenerable biological origin.

This plastic is high-polymer materials made of raw materials consisting of starch, sugar, or cellulose contained in plants.

The CO₂ in the atmosphere does not increase (carbon-neutral).

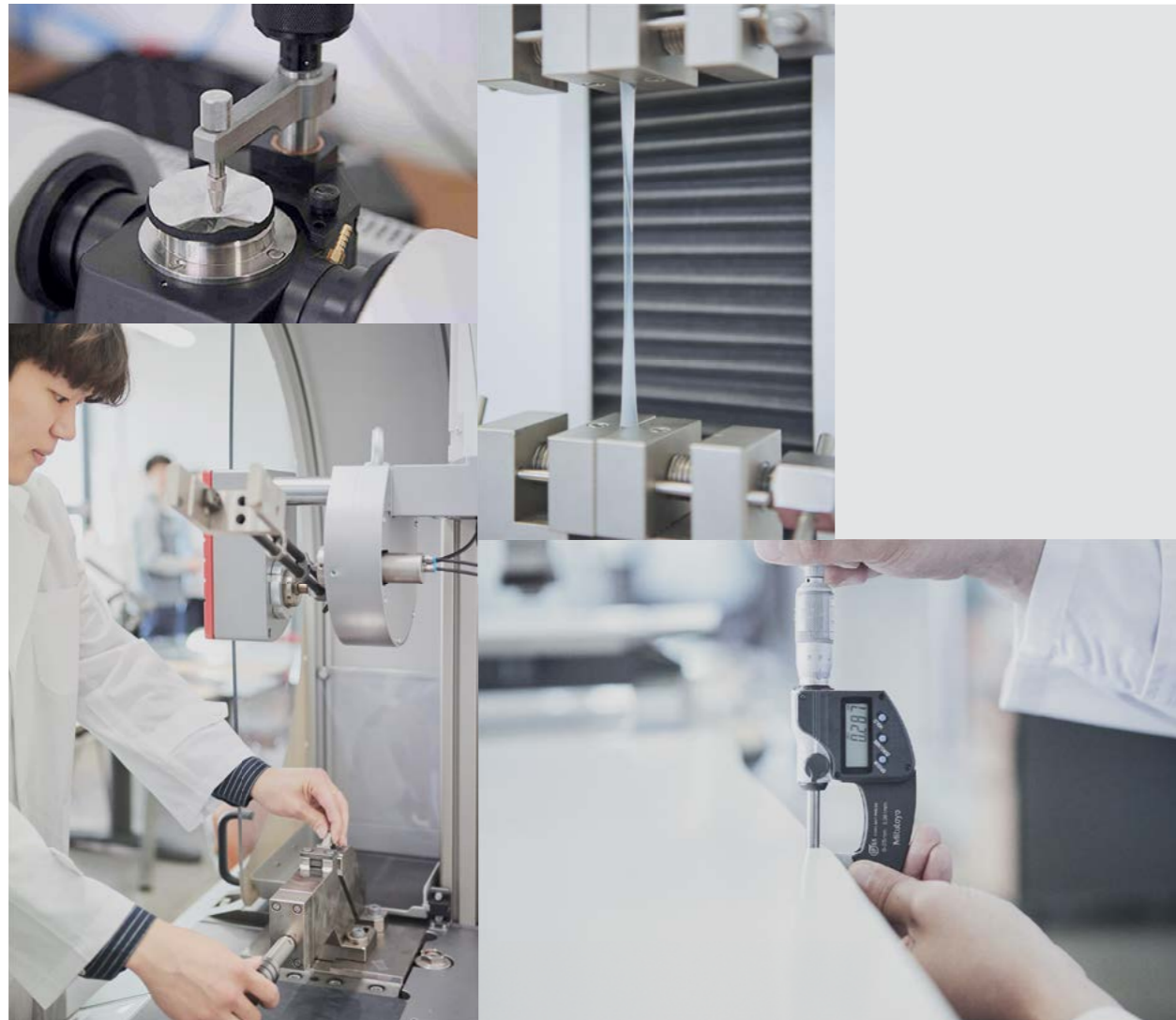
Therefore, it is an environmentally-friendly material that does not contribute to global warming.

Furthermore, this material is as strong and rigid as polystyrene.

- Sustainable plastic made with PLANT-derived resource
- BIO-Content from nature
- 28% Reduction in CO₂ emissions
- The product's appearance is as good as regular PET



Quality Control



01

Quality assurance and quality control, are key activities within the KP-tech manufacturing units. The company is committed to cGMP and CONTINUOUS QUALITY IMPROVEMENT.

02

A highly-qualified QA manager leads a team who monitor production 24/7, and follows strict release-criteria for finished goods.

03

KP-tech has invested in a fully-equipped laboratory to ensure that all quality-critical parameters are tested and recorded in real time, using state-of-the-art test equipment.

04

All quality-related queries are dealt with in a timely manner and any issues will receive a CAPA report.

05

KP-tech welcomes customer visits and has an open-door policy for customers who wish to audit the company in order to qualify the company as a supplier.

Certifications



ISO 9001 Certificate of Registration



ISO 14001 Certificate of Registration



SCSglobal



GRS Certificate of Compliance



Korean Eco-Label



FDA Test Report



DIN 68861 Test Report



ASTM 2180-18



SGS Institut Fresenius

Product Specification

General Specification

Dimension

ITEM	UNIT	SPEC.	TOLERANCE
Thickness	mm	Min. 0.2 / Max. 0.8	+5% -0%
Width	mm	Max.1500	+5mm -0mm
Roll diameter	mm	Max.600	-
Core diameter	inch	3" / 6"	-

• The roll diameter can be changed on customer's request.

This specification describes the quality and test specifications of GAG Deco sheet(BELITAPET) and ASA Deco sheet(BELITASA) manufactured by KP-tech.

Physical Specification

Color Consistency

ITEM	ΔE^*ab
White color	0.5
Other colors	0.8

[Test Condition]

- Equipment : CM-2600D

- Procedure : Place Specimen on the white plate and measure with a standard light source D65 with a colorimeter Specification

Gloss Level

ITEM	SPEC.	ANGLE	TEST METHOD
High Glossy	90±3.0	60°	ASTM D 523
Ultra matt	5±2.0	60°	ASTM D 523

Scratch Resistance

ITEM	SPEC.	LOAD	TEST METHOD
All	Min. H	250g	ASTM D 2578

Surface Resistance

STAINING AGENTS	CONTACT TIME	SPEC.	
		(High Glossy)	(Ultra Matt)
Water	24hrs	5	5
liquid paraffin	24hrs	5	5
Ethanol (48%)	1hrs	5	5
Coffee	1hrs	5	5

This test method is in accordance with EN 12720 : 2009

[Ratings]

5 = no change

4 = minor change(only visible under reflected light)

3 = moderate change(visible from several viewing directions)

2 = significant change in color or gloss

; slight change of structure(swelling, fibre raising, cracking, blistering)

1 = strong change

TIMELESS
ELEGANCE WITH
SUSTAINABLE
SURFACE FINISHES





| KP-tech |

Address : 37 Simigok-ro, Idong-eup, Cheoin-gu, Yongin-si, Gyeonggi-do, S, Korea

Tel : +82 31. 321. 4400(2) E-mail : sales@kp-tech.co.kr